



This product complies with the industry regulations Säker Vatteninstallation. The manufacturer guarantees the product's performance, provided that the industry regulations and the installation guide are followed.



INSTALLATION GUIDE

Floor drain FURO 104, 105, 141, 142
Cleanout and flushing drain FURO 196, 197

Manufacturer's declaration:

The manufacture of **FURO 104** and **105** has been carried out in accordance with the type approval documents for TG 1670.

NOTE! The drain is intended for the FLOOR TYPE that is checked in the box. Do not use it for another floor type.

Floor type: Clinker floor K1

Clinker tiles in setting mortar for floors with bonded membrane as waterproofing (asphalt compound or self-adhesive rubberized asphalt membrane).

1. The plumber:

Fixate the drain with the help of threaded rods or support braces (accessory) which are fitted in the anchors of the drain. Adjust it horizontally. Connect the sewer pipe.

2. The concrete finisher:

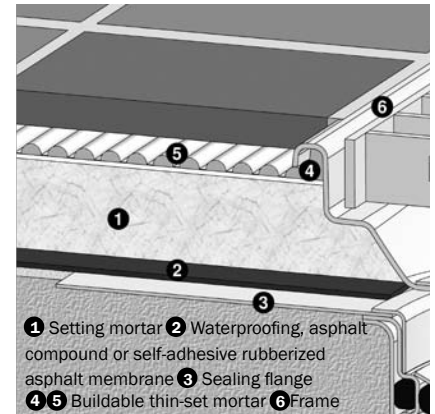
The concrete shall be vibrated thoroughly underneath the entire drain.

3. The tiler:

Turn the frame **6** upside down, apply primer, and fill it completely with buildable thin-set mortar **4**. Clean the stainless sealing flange of the drain **3**. Adhere the waterproofing **2** so that the drainage slot is not clogged. Follow the instructions from the waterproofing supplier.

NOTE! The waterproofing shall be of such material (asphalt compound or self-adhesive rubberized asphalt membrane) that is adhesive to stainless steel.

Put the tiles in setting mortar **1** with cement slurry or thin-set mortar **5**. Add the buildable thin-set mortar underneath the entire frame of the drain.



Floor type: Clinker floor K3 and steel-polished concrete floor

Clinker tiles in setting mortar on floors without waterproofing. Only applicable to slab-on-grade construction.

1. The plumber:

Fixate the drain with the help of threaded rods or support braces (accessory) which are fitted in the anchors of the drain. Adjust it horizontally. Connect the sewer pipe.

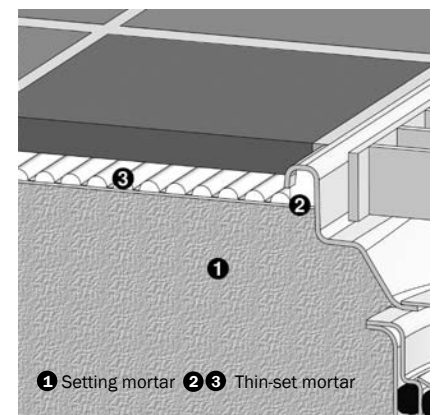
2. The concrete finisher:

The concrete shall be vibrated thoroughly underneath the entire drain **1**. Add concrete or thin-set mortar under the frame as well so that the space within the frame is completely filled **2**.

3. The tiler:

Add thin-set mortar under the frame so that the space within the frame is completely filled **2**.

Put the tiles in setting mortar **1** with cement slurry or thin-set mortar **3**.



Floor type: Clinker floor K4

Clinker tiles glued on filled/rolled waterproofing layer.

1. The plumber:

Fixate the drain with the help of threaded rods or support braces (accessory) which are fitted in the anchors of the drain. Adjust it horizontally. Connect the sewer pipe.

2. The concrete finisher:

The concrete shall be vibrated thoroughly underneath the entire drain. The adhesive flange **2** must be protected throughout the building period so that it is not deformed.

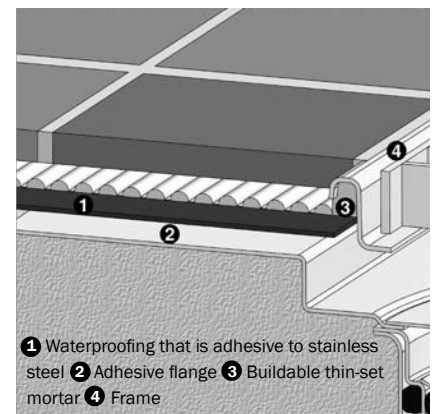
3. The tiler:

Turn the frame **4** upside down, apply primer, and fill it completely with buildable thin-set mortar **3**. Clean the stainless adhesive flange of the drain **2**. Apply the waterproofing **1** according to the waterproofing suppliers instructions.

NOTE! The waterproofing must be adhesive to the stainless sealing flange.

Put the tiles in buildable thin-set mortar **3** up to a few rows short of the drain. Add the buildable thin-set mortar underneath the entire frame of the drain so that it will be set at the right level.

This is very important to ensure that the frame remains rigid when a load is applied.



NOTE! The drain is intended for the FLOOR TYPE that is checked in the box. Do not use it for another floor type.

Floor type: Clinker floor K5

Clinker tiles glued on pinched waterproofing membrane/vinyl flooring 1-4 mm.

1. The plumber:

Fixate the drain with the help of threaded rods or support braces (accessory) which are fitted in the anchors of the drain. Adjust it horizontally. Connect the sewer pipe.

2. The concrete finisher:

The concrete shall be vibrated thoroughly underneath the entire drain.

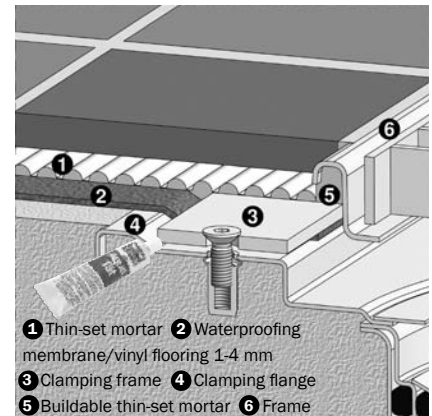
3. Waterproofing layer installer:

Clean the clamping flange ④ of the drain. Treat the clamping flange ④ with primer as directed by the waterproofing supplier. Vinyl flooring may need to be double-bonded to the clamping flange ④ with Casco Proff or equivalent (contact adhesive effect). Put a string of sealant, Casco Aqua Tät, on the flange of the drain outside of the nuts. Cut the waterproofing membrane/vinyl flooring ② following the inner edge of the drain. Put the clamping frame ③ into place. Mark and make holes for the screws. Fasten the frame. Tighten the screws.

4. The tiler:

Turn the frame ⑥ upside down. Treat with primer and fill it completely with buildable thin-set mortar ⑤. Put the tiles in thin-set mortar ① up to a few rows from the drain. Put the buildable thin-set mortar underneath the entire frame ⑤ of the drain so that it ends up at the right level.

This is very important to ensure that the frame remains rigid when a load is applied.



① Thin-set mortar ② Waterproofing membrane/vinyl flooring 1-4 mm
③ Clamping frame ④ Clamping flange
⑤ Buildable thin-set mortar ⑥ Frame

Floor type: Resin flooring

1. The plumber:

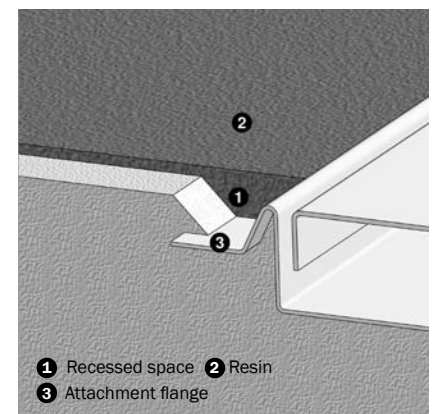
Fixate the drain with the help of threaded rods or support braces (accessory) which are fitted in the anchors of the drain. Adjust it horizontally. Connect the sewer pipe.

2. The concrete finisher:

The concrete shall be vibrated thoroughly underneath the entire drain. There should be no air pockets under the attachment flange ③. The attachment flange ③ is protected by a recess strip. Let it remain during the casting.

3. Resin flooring installer:

Remove the recess strip and clean the attachment flange from any concrete residue. Treat the attachment flange ③ with primer for non absorbent surfaces and sprinkle with fine sand that is left to dry in the primer.



① Recessed space ② Resin
③ Attachment flange

Floor type: Concrete floor with 1,5 – 4 mm vinyl flooring

1. The plumber:

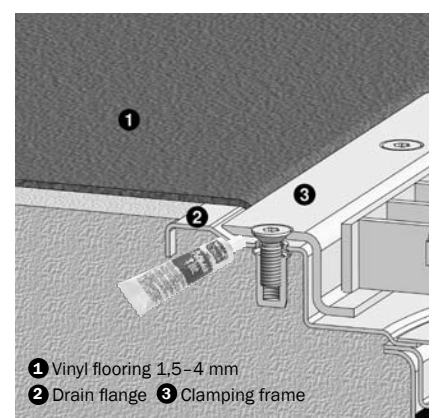
Fixate the drain with the help of threaded rods or support braces (accessory) which are fitted in the anchors of the drain. Adjust it horizontally. Connect the sewer pipe.

2. The concrete finisher:

The concrete shall be vibrated thoroughly underneath the entire drain.

3. Vinyl flooring installer:

Clean the drain flange ②. Double-bond the drain flange ② with Casco Proff or equivalent (contact adhesive effect). Put a string of sealant, Casco Aqua Tät, on the drain flange ② outside of the nuts. Cut the vinyl flooring ① following the inner edge of the drain. Put the clamping frame ③ into place. Mark and make holes for the screws. Soften the vinyl flooring by heating. Fasten the frame. Tighten the screws.



① Vinyl flooring 1,5-4 mm
② Drain flange ③ Clamping frame